

Teledyne Oceanscience

Q-Boat 1800™

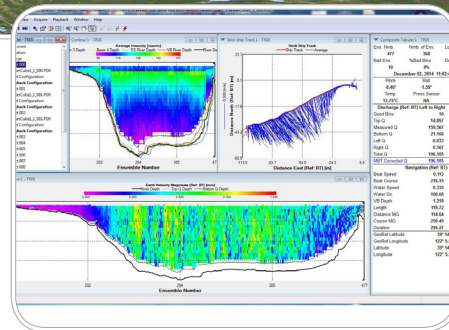
Remotely-Operated Instrumentation Boat

Maximize ADCP Survey Efficiency

The Teledyne Oceanscience Q-Boats are the top choice for reliable remotely-controlled acoustic Doppler current profiling in streams, rivers, lakes and coastal waters all over the world. Reduce your survey time, keep people safe during difficult conditions, or access hard to reach locations with the Q-Boat to suit your survey and budget. Mounts for all popular acoustic Doppler profilers are available as standard.

The Q-Boats provide a total solution to river discharge measurements. The Q-Boat 1800P features twin high power outdrives to give a top speed of 5m/s (16fps) with the security of dual motors. The precision variable speed propulsion allows effective profiling at speeds as low as 30cm/s (1.0fps), and is easy to operate in both high and low velocity conditions. Dual steering mechanisms offer added security for safe deployments.

The Q-Boat 1800D features a single robust outdrive to give a top speed of 2m/s (7fps). Dependability is provided by the simplicity and durability of its rugged one-piece outdrive. The easy to operate Q-Boat 1800D is designed to be cost effective without sacrificing reliability, and sets a new standard in affordable remote control river discharge monitoring.



PRODUCT FEATURES

- Reduce survey time
- No personnel in or over the water
- Real time data to shore laptop
- Fast single or dual-person mobilization
- Not restricted to bridges or taglines
- Multiple instrument adaptability
- High-impact UV resistant ABS



Q-Boat 1800™

Remotely-Operated Instrumentation Boats

TECHNICAL SPECIFICATIONS

Physical

Hull Length	180cm (5.9 ft.)
Hull Width	90cm (2.95 ft.)
Weight of Base Boat	30kg (66 lbs.)
Payload	30kg (66 lbs.)
Hull Material	UV Resistant ABS
Motor: Q-Boat 1800D	Single-Brushed DC Outdrive
Motor: Q-Boat 1800P	Dual Brshless 24V DC Outdrive

Remote Control

Navigation Remote Control Unit	Hitec with Vessel Telemetry
Navigation Remote Control Unit Frequency	2.4GHz FHSS
Navigation Remote Control Range	1200m
Data Telemetry Range - Bluetooth	600m
Data Telemetry Range - 900 MHz Hydrolink	>2000m
Data Telemetry Range - 5.8GHz Ethernet	up to 1500m

Performance

Typical Survey Speed	3-4kts (1.5-2.0m/s)
Top Speed: Q-Boat 1800D	4 kts (2m/s)
Top Speed: Q-Boat 1800P	10 kts (5m/s)
Battery Endurance: Q-Boat 1800D	Up to 150 minutes
Battery Pack: Q-Boat 1800D	1 x 12V 10Ah
Battery Endurance: Q-Bpat 1800P	Up to 240 minutes
Battery Pack: Q-Boat 1800P	3 x 24V 30 Ah

Instrumentation

Teledyne RD Instruments RiverRay
 Teledyne RD Instruments RiverPro
 Teledyne RD Instruments Rio Grande
 Teledyne RD Instruments StreamPro
 Teledyne RD Instruments Monitor
 Sontek RiverSurveyor M9
 Linkquest Flowquest

Specifications subject to change without notice.
 ©2015 Teledyne Oceanscience All rights reserved.
 September 2015